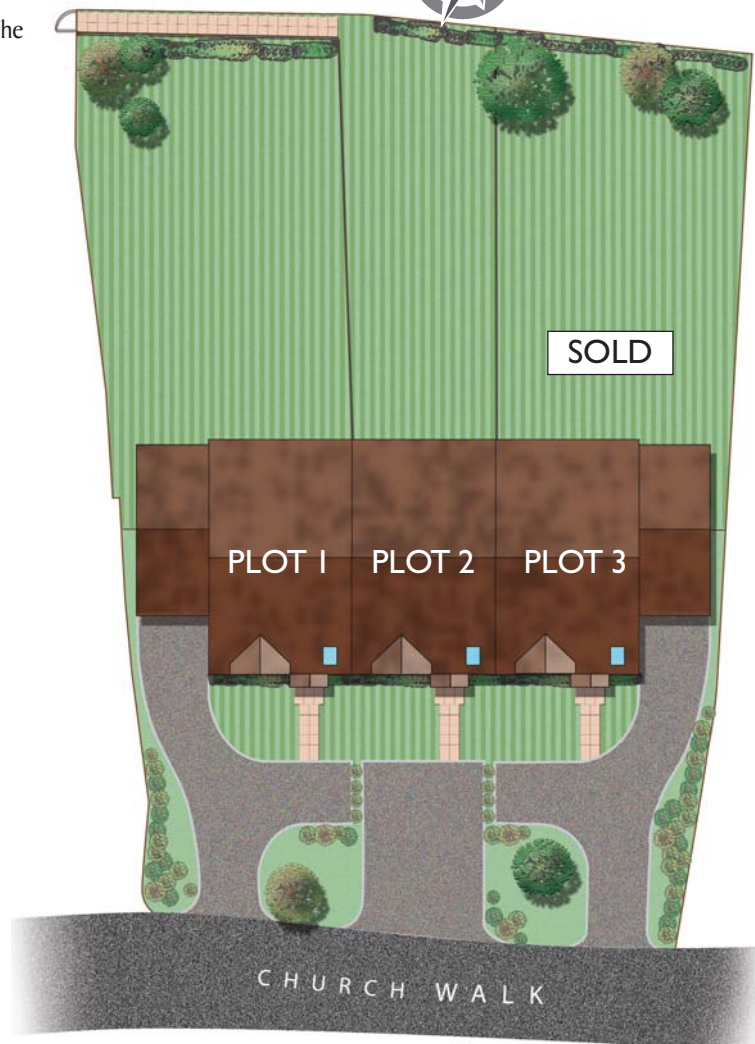
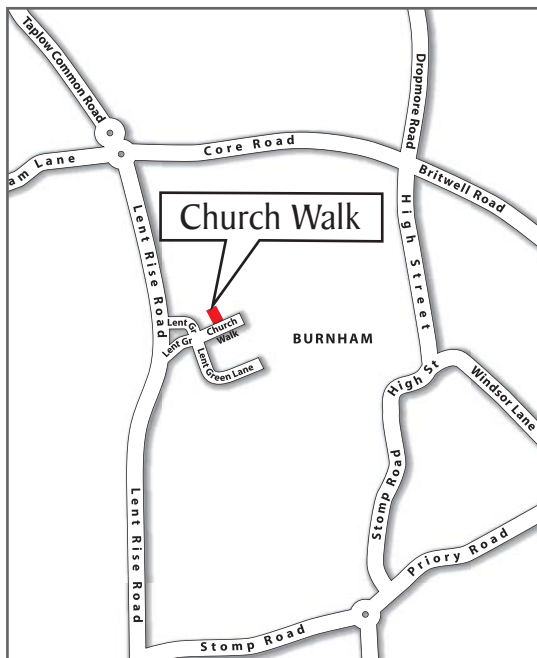




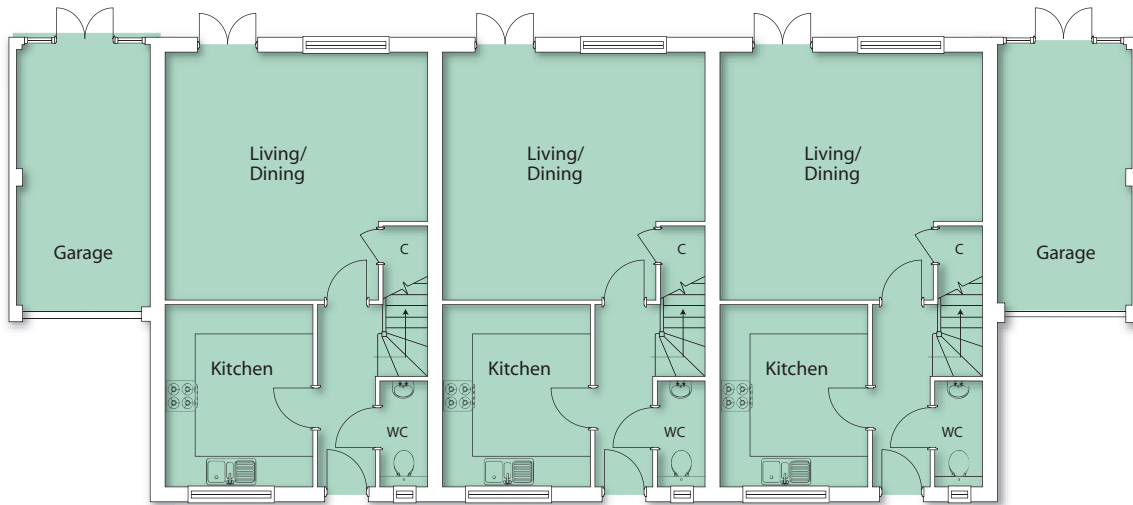
7 Church Walk, Burnham, is a terrace development of 3 x 4 bedroom, 3 storey houses, with a garage to plots 1 and 3 and each house with two parking spaces and a good sized private garden. (Plot 3 sale has been pre-agreed). The development leads off a private road which branches off from Lent Green. The properties will be built to Newhomes Estates Ltd exacting standards and specifications.



Location:

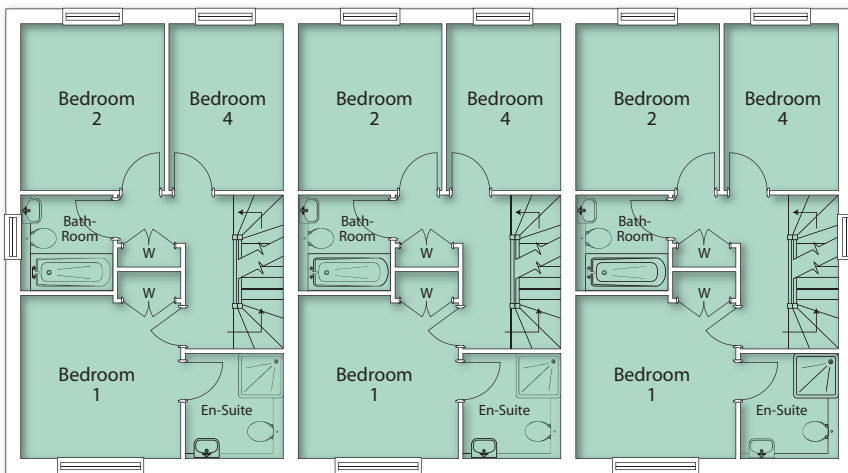
Burnham Village is a thriving community served by numerous business and local independent retailers. There are excellent transport links; with stations at both Burnham (approx 5 mins drive) and Slough Trading Estate (approx 10 mins drive). The area is well served with a number of schools including a Grammar School plus numerous leisure and social activities.

Church Walk Burnham, Bucks SL1 7AN



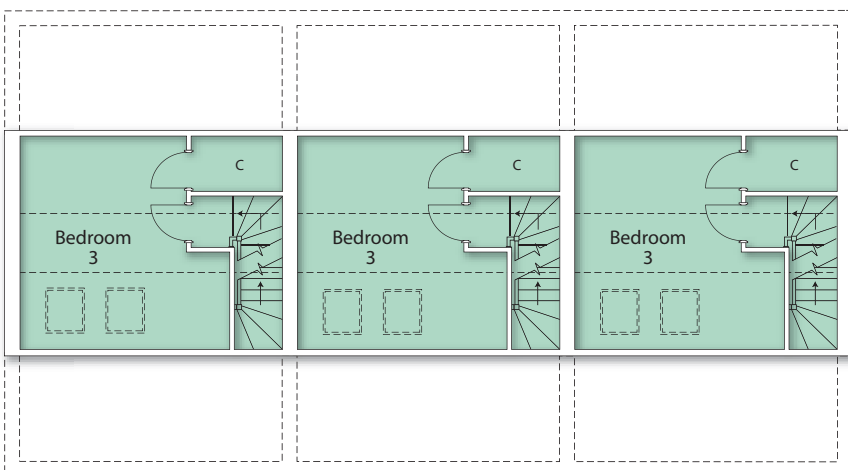
Ground floor

Living/Dining	5.35m x 5.02m	17'6" x 16'6"
Kitchen	3.70m x 3.03m	12'2" x 9'11"
Garage Plots 1/3	5.80m x 2.73m	19'0" x 9'0"



First floor

Bedroom 1	3.33m max x 3.27m max	10'11" max x 10'9" max
En-Suite		
Bedroom 2	3.36m x 2.94m	11'0" x 9'8"
Bedroom 4	3.36m x 2.34m	11'0" x 7'8"



Second floor

Bedroom 3	4.30m x 4.18m	14'1" x 13'6"
-----------	---------------	---------------



NEWHOMES ESTATES LTD
DEVELOPMENT & CONSTRUCTION

Bridge House, Chiltern Hill, Chalfont St Peter, Bucks SL9 9UE

Tel: 01753 480330 Website: www.newhomesestates.com Email: land@newhomesestates.com